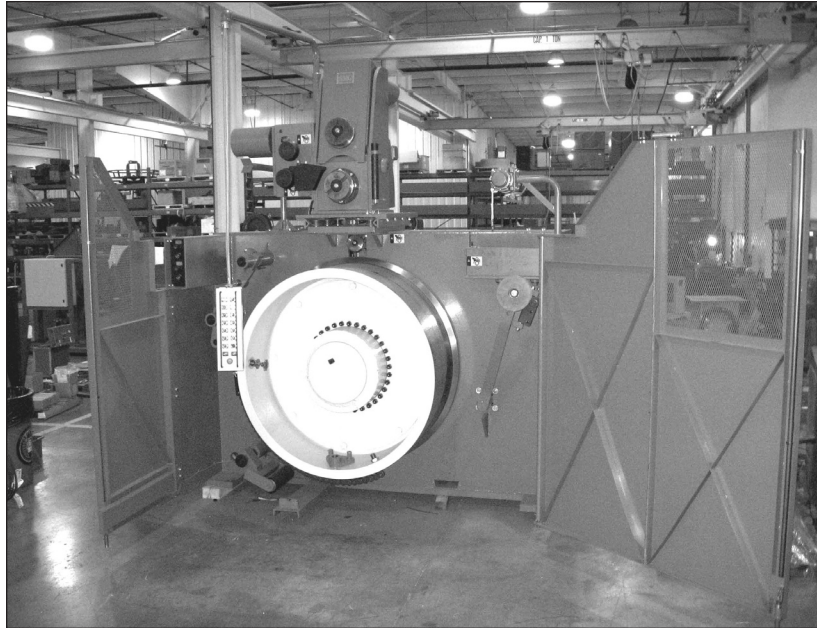


## 60" (1500 mm) Capstan In-Line Wire Drawing Machine

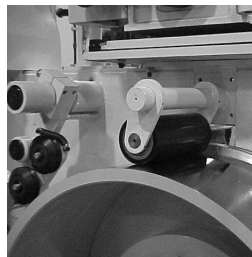
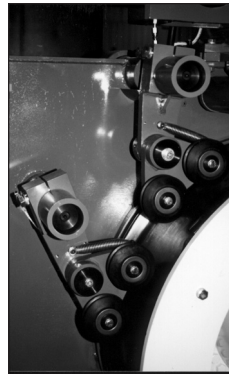
### RMG Model 1922



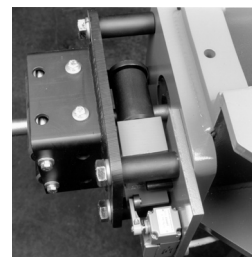
*RMG Model 1922  
In-Line Wire Drawing Machine.*

Model		1922
Capstan Diameter		60" (1524 mm)
Max. Wire Diameter	Alloy Mild Steel	1.188" (30.18 mm) 1.375" (34.93 mm)
Maximum Tractive Drawing Force		30,000 lbs. (13,600 kg)
HP Range (kW)		25-200 (19-148 kW)
Approximate Dimensions	L	138" (3505 mm)
	W	90" (2286 mm)
	H	138" (3505 mm)
12" (305 mm) Feedhead		standard

*Quad 5" Pneumatic Wire Relaxer is standard on all RMG Model 1922 machines.*



*"Twelve O'Clock" Roller is standard on all RMG Model 1922 Wire Drawers.*



*End-of-coil detector, standard on all RMG Model 1922 Wire Drawers, signals twelve o'clock roller.*



*"Seven O'Clock" Roller keeps wire from dragging on plant floor.*

### General Description

Capable of imposing tractive drawing forces of as high as 30,000 lbs. (13,600 kg), this extremely rugged large-diameter wire drawer is adaptable to 1.188" (30.18 mm) and 1.375" (34.93 mm) cold headers and bolt makers.

RMG's Model 1922 series machine differs from all other in-line wire drawing machines in these important respects:

1. The gripper is permanently attached to the capstan for ease of set-up.
2. The Model 1922 includes a power-driven retractable feed head assembly which feeds and straightens the wire during set-up advancing the head-end of the material over to the header's feed rolls in a pre-straightened condition.
3. The "Twelve O'Clock" roller, an exclusive RMG design and standard on the Model 1922, is used to bend the tail end of the coil around the capstan, keeping the end of the coil from damaging the machine as it releases.

Please refer to page 2.4 and 2.5 in this section for a detailed description of all RMG In-Line Wire Processing Machine components.



### ROCKFORD MANUFACTURING GROUP INC.

14343 INDUSTRIAL PARKWAY • SOUTH BELOIT, ILLINOIS 61080

PHONE 815.624.2500 • FAX 815.624.7254 • EMAIL: rmgfelm@rmgfelm.com • Website: www.rmgfelm.com