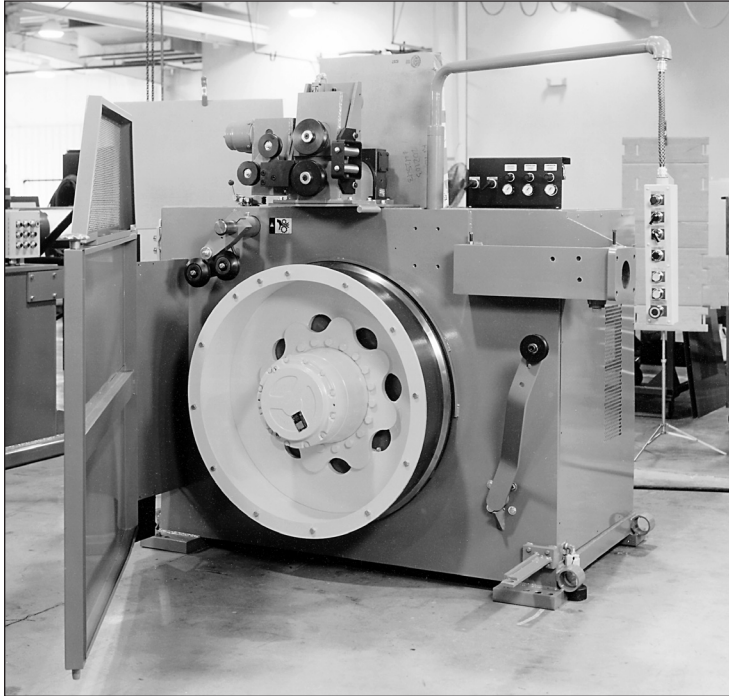


44" (1100 mm) Capstan In-Line Wire Drawing Machine

RMG Model 1011

2.11



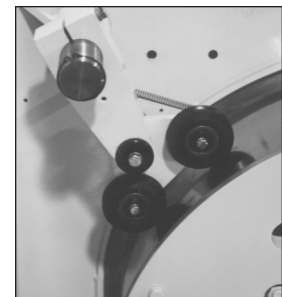
*RMG Model 1011
In-Line Wire Drawing Machine
shown with optional 6" feedhead.*

Model		1011
Capstan Diameter		44" (1100 mm)
Max. Wire Diameter	Alloy	.630" (16.0 mm)
	Mild Steel	.687" (17.5 mm)
Maximum Tractive Drawing Force		16,000 lbs. (7260 kg)
HP Range (kW)		20-125 (15-93 kW)
Dimensions	L	93" (2362 mm)
	W	61" (1549 mm)
	H	84" (2134 mm)
6" (152 mm) Feedhead		optional

General Description

Capable of imposing tractive drawing forces of as high as 16,000 lbs. (7260 kg), these 44" (1100 mm) capstan wire drawers are adaptable to all 5/8" (16 mm) and 1 1/16" (17.5 mm) cold headers and bolt makers.

Please refer to page 2.4 and 2.5 in this section for a detailed description of all RMG In-Line Wire Processing machine components.



*5" Dual Pneumatic Wire-Relaxer
is standard on all
Model 1011 machines.*



ROCKFORD MANUFACTURING GROUP INC.

14343 INDUSTRIAL PARKWAY • SOUTH BELOIT, ILLINOIS 61080

PHONE 815.624.2500 • FAX 815.624.7254 • EMAIL: rmgfelm@rmgfelm.com • Website: www.rmgfelm.com